

# HASTINGS RANCH OFFICE FOR LEASE



**650 SIERRA MADRE VILLA AVE**  
PASADENA, CA 91107

**UNIT:**  
**102**

## PROPERTY HIGHLIGHTS:

**SIZE:**  
**1,851 SQFT**

**PRICE:**  
**\$2.65/SF FSG**

- Ground floor office featuring a reception area, four private offices, two cubicle spaces, a conference room and a kitchenette.
- Conference room has small countertop with space for a mini-fridge
- Office was fully renovated in 2019 with new carpeting, paint, window shades and lighting
- Building has both surface (\$25/space) and garage level (\$75/space) parking with a valet option for guests
- Quick access to the 210/134 freeways



**Hoss MacVaugh**

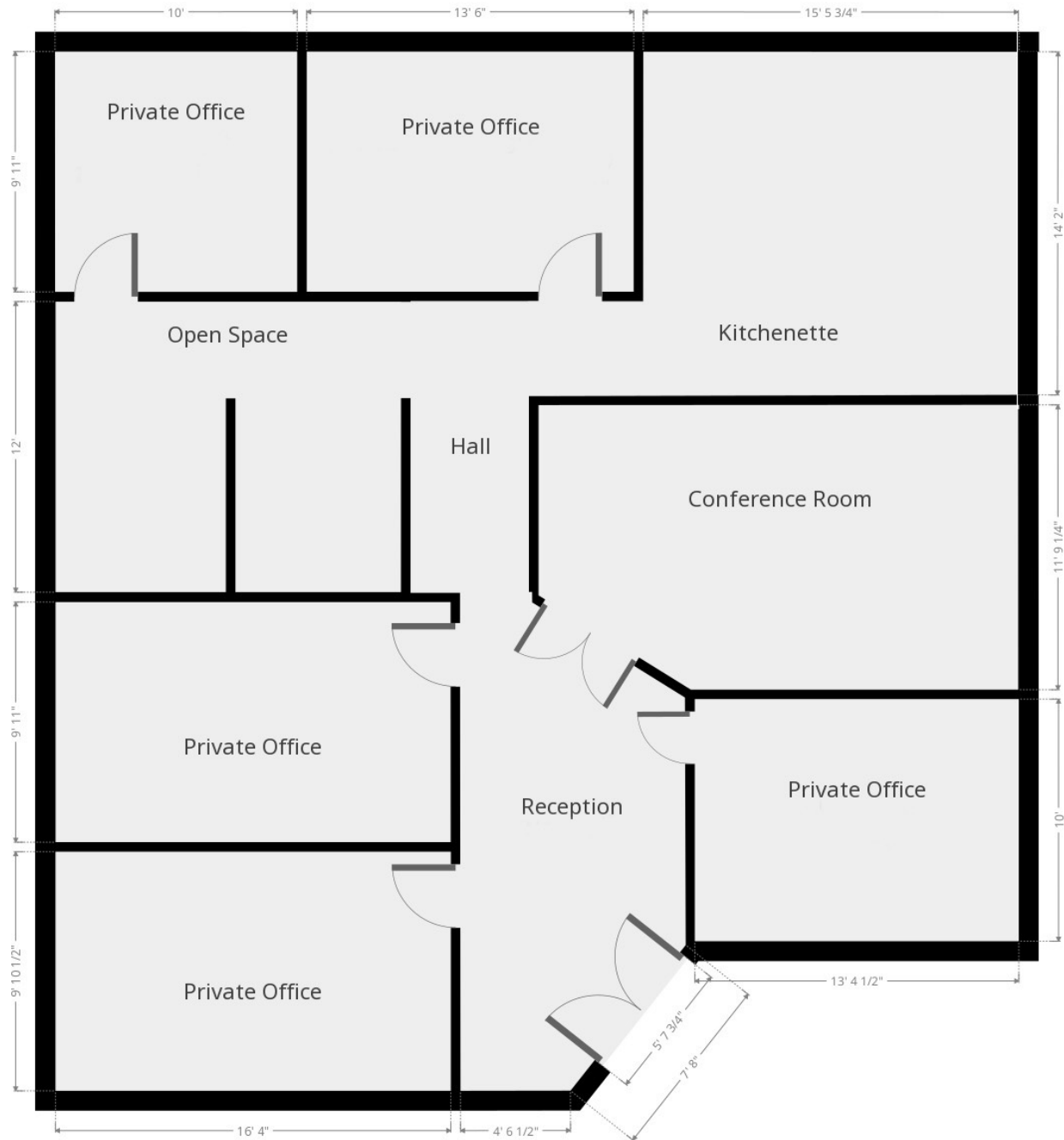
**Office:** 626.583.8400 • **Cell:** 626.255.2308 • **Email:** [hoss@macvaugh.com](mailto:hoss@macvaugh.com)

MacVaugh & Co. • 300 S. Raymond Avenue • Suite 14 • Pasadena, CA 91105 • [www.macvaugh.com](http://www.macvaugh.com)

The information contained herein has been obtained from sources deemed to be reliable. While we have no reason to doubt its accuracy, we do not guarantee to and assume no liability for any inaccuracies and/or omissions. This is not an offering.  
Terms and conditions are subject to change. BRE License #00971669

## 650 Sierra Madre Villa Ave, Suite 102

Approximately 1,851 SQFT



**Hoss MacVaugh**

Office: 626.583.8400 • Cell: 626.255.2308 • Email: [hoss@macvaugh.com](mailto:hoss@macvaugh.com)

MacVaugh & Co. • 300 S. Raymond Avenue • Suite 14 • Pasadena, CA 91105 • [www.macvaugh.com](http://www.macvaugh.com)

The information contained herein has been obtained from sources deemed to be reliable. While we have no reason to doubt its accuracy, we do not guarantee to and assume no liability for any inaccuracies and/or omissions. This is not an offering.  
Terms and conditions are subject to change. BRE License #00971669