

# THE ANTI-HIGHRISE OFFICES FOR LEASE

650 Sierra Madre Villa Ave, Pasadena 91107



Hoss MacVaugh  
Hoss@MacVaugh.com | 626.255.2308



SQFT

1,395

PRICE

\$2.65/SF

TYPE

FSG

## Suite 202 Highlights

- 2 offices with conference room
- Fully carpeted
- Fresh paint, new LED lights
- Direct elevator access
- Kitchenette
- North facing mountain views

## Building Highlights

- Open-air office building
- Common area patio with benches, lunch tables and Wifi
- 24/7 secure access
- 2019 building renovation
- \$25/lot parking
- \$75/underground parking



**Hoss MacVaugh**

(c) 626.255.2308 | (o) 626.583.8400

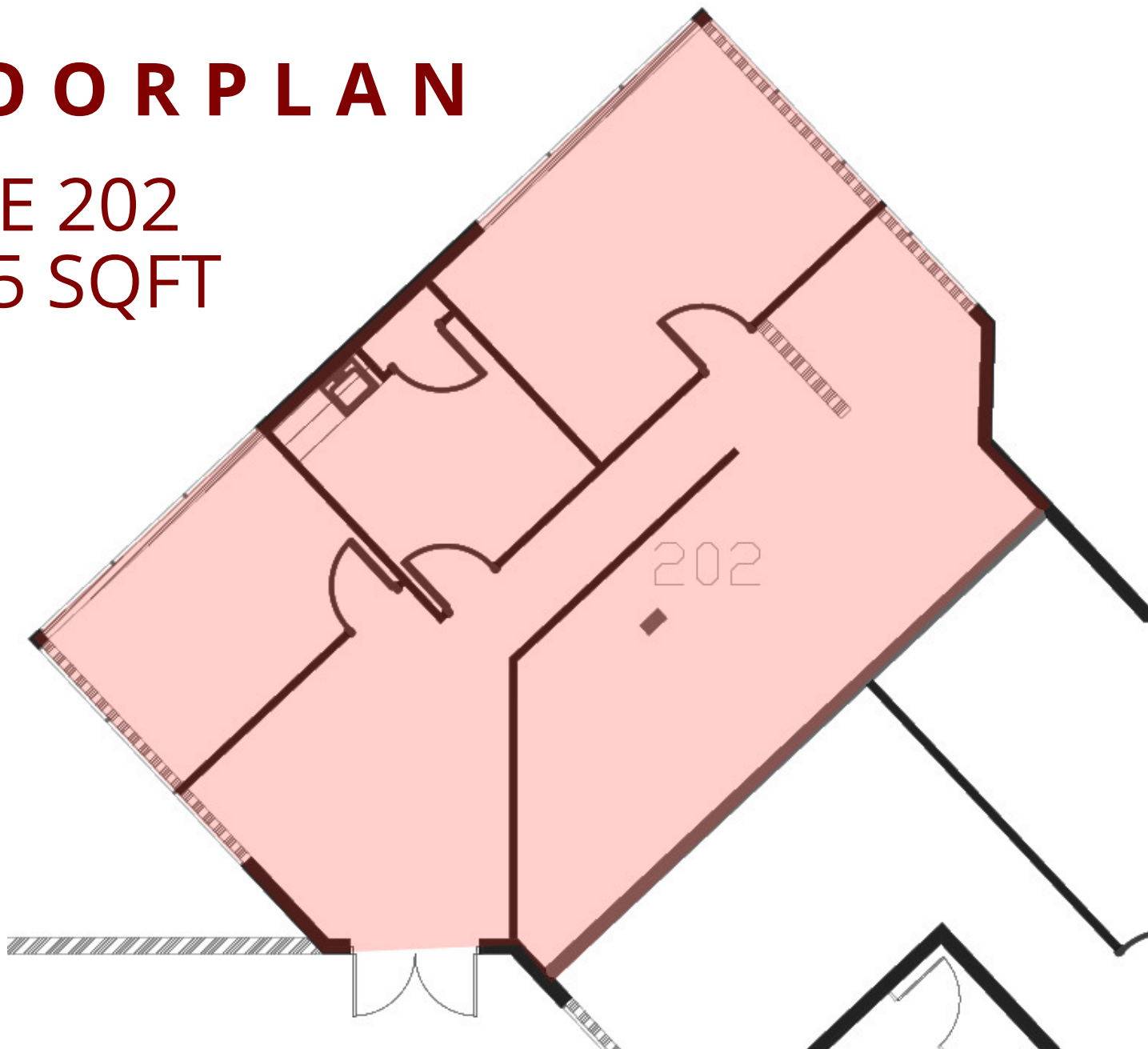
Hoss@MacVaugh.com

BRE# 00971669



# FLOORPLAN

SUITE 202  
1,395 SQFT





# PASADENA, CA CITY INFORMATION

---

- 200k population, 110k employees, 127k average household income all within a 3-mile radius

- The seasonal population reaches its peak through the Rose Bowl with sports events, concerts and New Years Eve/Day

- Ranked as one of the top walking and retail locations in the United States with a walk score of 98 and a bike score of 73

- National icons such as Art Center College of Design, JPL and Cal Tech

- Deeply rooted with history, architecture and art with notable neighbors such as the Norton Simon Museum, City Hall and hundreds of historically significant buildings

- Multiple Metro Gold Line stops are located throughout the city - Bringing in people from Azusa to Downtown Santa Monica

- You'll find a combination of mom-and-pop shops and major tenants keeping the history of the city alive while bringing a modern day flare







(c) 626.255.2308  
(o) 626.583.8500

**Hoss MacVaugh**  
Hoss@MacVaugh.com  
#02138664

119 E Union St, Suite D  
Pasadena, CA 91103

The information contained herein has been obtained by sources deemed to be reliable. While we have no reason to doubt its accuracy, we do not guarantee to and assume any liability for any inaccuracies and/or omissions. Terms and conditions are subject to change. BRE License #02138664