

95 N RAYMOND AVE

Pasadena, CA 91103

RETAIL FOR LEASE

CAFE BIZOU

91

Holly ST
100E

MACVAUGH & CO
Commercial Real Estate Services

SQFT

1,200

PRICE

\$4.00/SF

TYPE

NNN

95 N Raymond Ave Highlights

- Beautiful corner location
- Exposed brick walls with exposed ceilings
- Currently in shell condition - giving the ability to truly make the space what you want
- Water hookups available
- Private restroom
- Direct neighbors include Kaviar Sushi, Osawa, Slaters 50/50, and Bone Kettle
- Easy access to 210/134 Freeways

[Click Here for Virtual Tour](#)

Hoss MacVaugh

(c) 626.255.2308 | (o) 626.583.8400

Hoss@MacVaugh.com

BRE# 00971669



Neighboring Tenants

Fair Oaks Ave



Union St



Commune Records
Jenette Bras
Veronique Bridal



UNION

CHIGNON
HAIR SALON

Perle

Tibet Nepal House



Electric Dr



Kendall Aly



CHADO
-THE WAY OF TEA-

Osawa Shabu Shabu Sushi



Raymond Ave



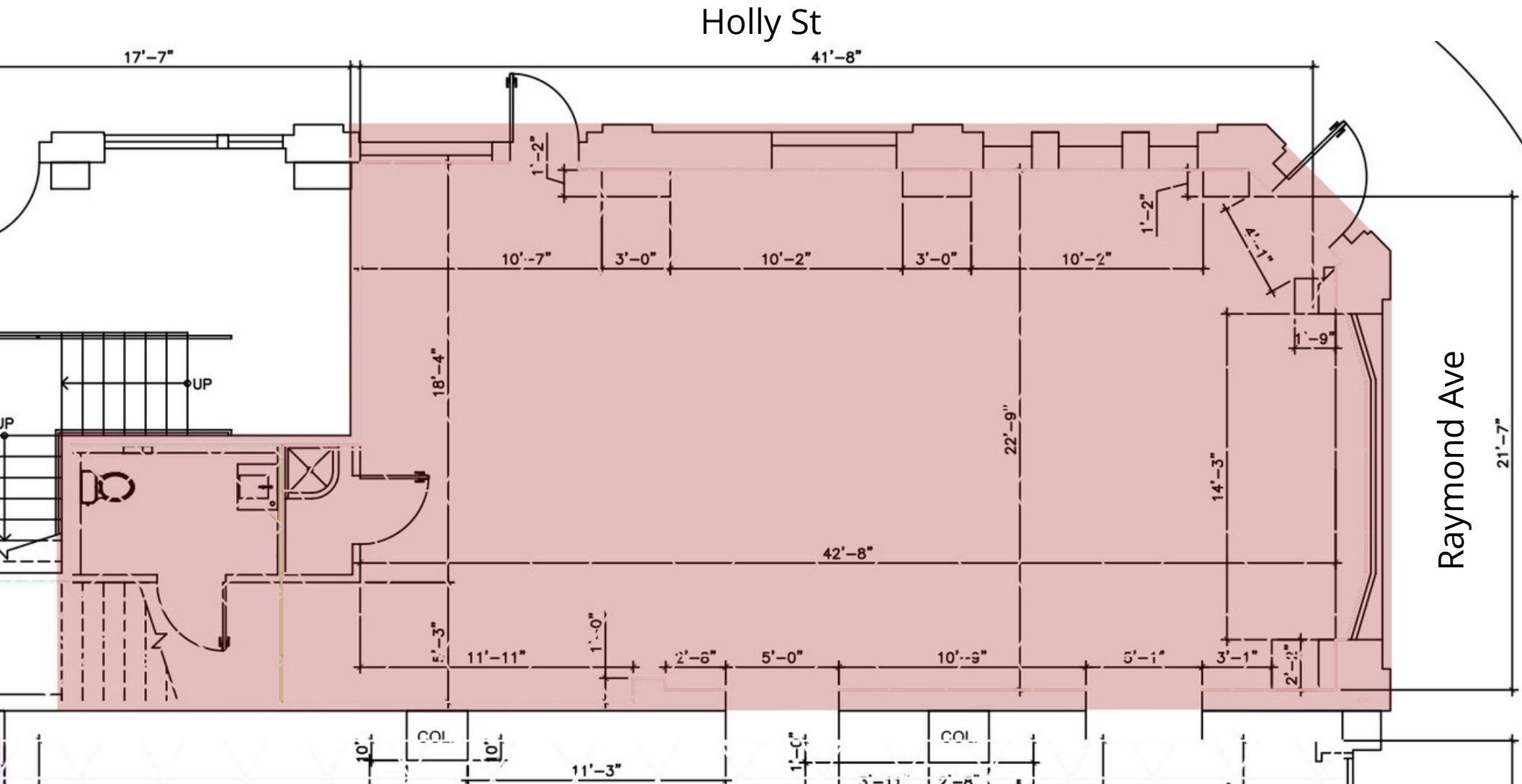
It9
Tea Blends



JUMAK



95 N RAYMOND FLOORPLAN 1,200 SQFT



PASADENA, CA CITY INFORMATION

200k population, 110k employees, 127k average household income all within a 3-mile radius

The seasonal population reaches its peak through the Rose Bowl with sports events, concerts and New Years Eve/Day

Ranked as one of the top walking and retail locations in the United States with a walk score of 98 and a bike score of 73

National icons such as Art Center College of Design, JPL and Cal Tech

Deeply rooted with history, architecture and art with notable neighbors such as the Norton Simon Museum, City Hall and hundreds of historically significant buildings

Multiple Metro Gold Line stops are located throughout the city - Bringing in people from Azusa to Downtown Santa Monica

You'll find a combination of mom-and-pop shops and major tenants keeping the history of the city alive while bringing a modern day flare





Hoss MacVaugh

626.583.8400 | Hoss@MacVaugh.com

#00971669

MACVAUGH & CO
Commercial Real Estate Services

The information contained herein has been obtained by sources deemed to be reliable. While we have no reason to doubt its accuracy, we do not guarantee to and assume any liability for any inaccuracies and/or omissions. Terms and conditions are subject to change. BRE License #02138664