

718 PRIMROSE AVE MONROVIA, CA 91016



MACVAUGH & CO
Commercial Real Estate Services

INDUSTRIAL SUBLEASE

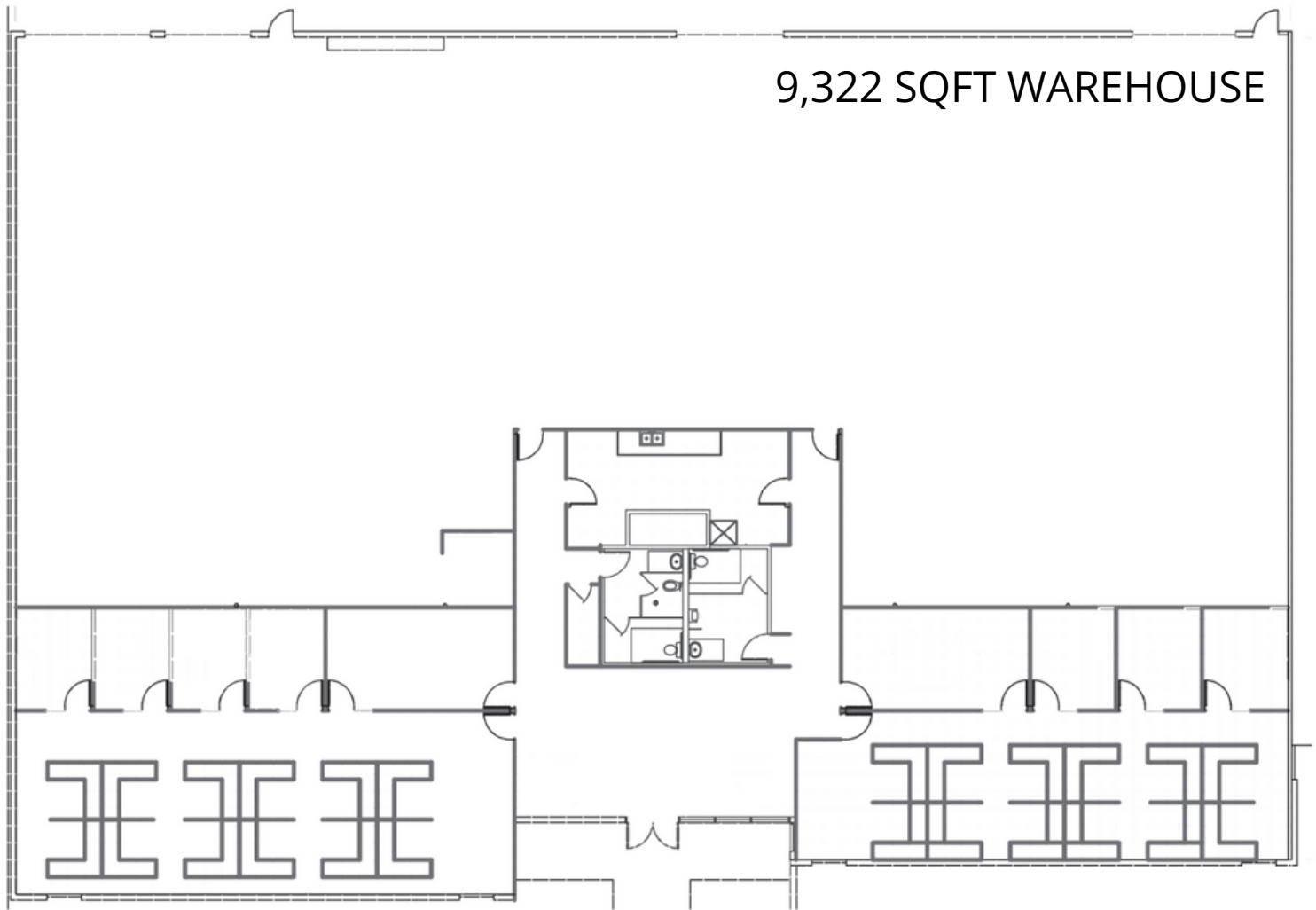
14,538 SQFT @ \$1.80/SF

Highlights

- **Building Size:** 14,538 SQFT
- **Office Size:** 5,216 SQFT
- **Year Built:** 1979
- **Parking:** Fenced in with 19 spaces & 2 handicap spaces
- **Ceiling Height:** 16'
- **Zoning:** Business Enterprise
- **Term:** Negotiable
- Available for the first time in 20 years
- Located in Old Town Monrovia
- **Business Enterprise Zoning Uses:**
 - Administrative/professional, Adult Day Care (CM), Alcoholic Sales (C), Animal Boarding (CM), Athletic Club, Automobile Parking, Bar (C), Business Support Services, Child Care Services, Construction Services (C), Entertainment Facilities (C), Financial Institutions, Food/Beverage Sales, Laboratory Services, Veterinary Services, Light Manufacturing, Warehouse/Wholesaling

Ryan Mitchell | Ryan@MacVaugh.com | 626.833.7390
BRE #02013681

718 PRIMROSE AVE MONROVIA, CA 91016



9,322 SQFT WAREHOUSE

5,216 SQFT OFFICE



Ryan Mitchell | Ryan@MacVaugh.com | 626.833.7390
BRE #02013681