

1 S FAIROAKS AVE

PASADENA, CA 91105

Creative Office for Lease



SUITES 302 & 304 HIGHLIGHTS

PRICE

\$3.00/SF FSG

SIZE

937 SQFT

LAYOUT

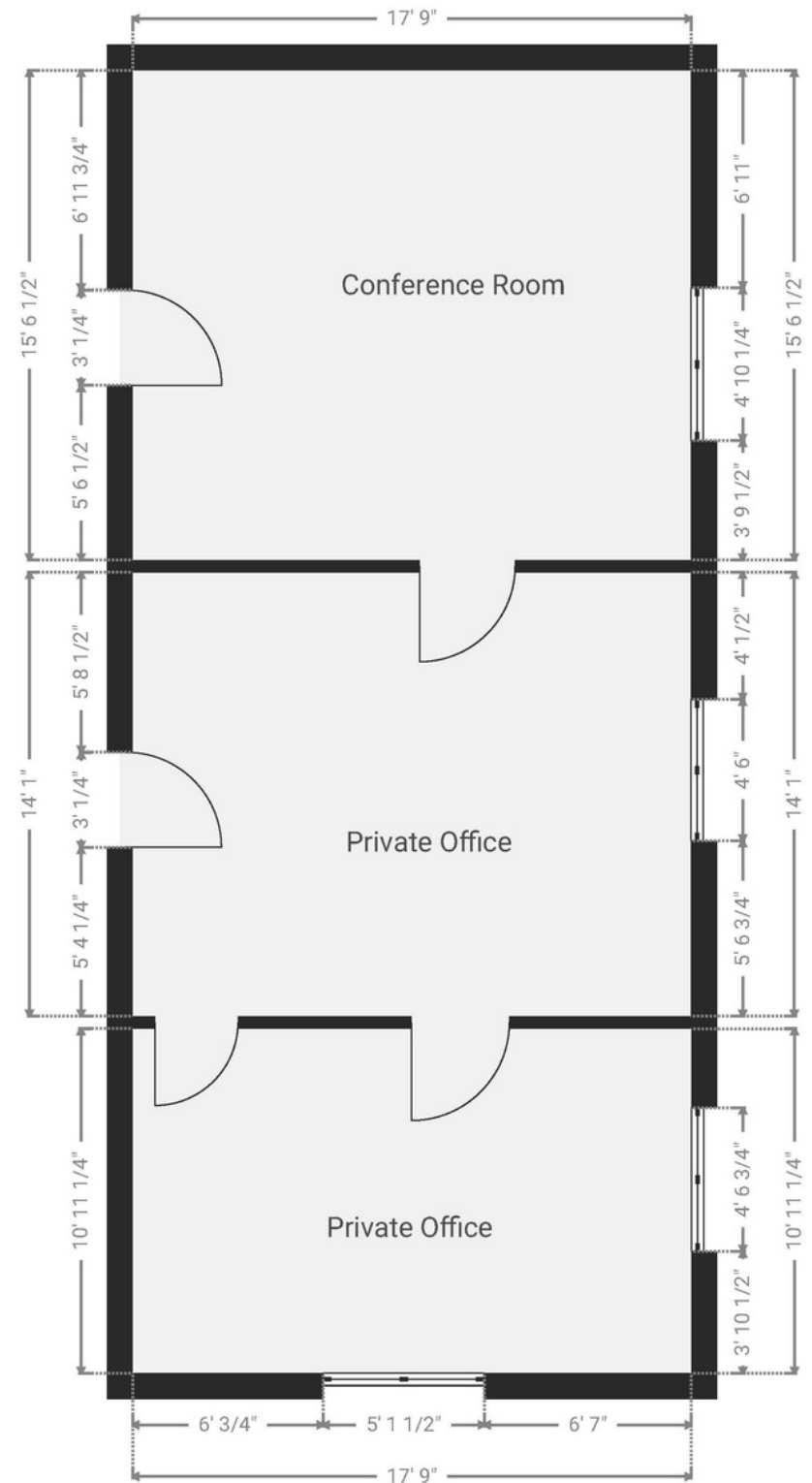
2 - 3 private offices and a conference room

FINISHES

Laminate flooring, high ceilings, beautiful natural light

AVAILABLE

6/1/2024



PASADENA, CA CITY INFORMATION

- 200k population, 110k employees, 127k average household income all within a 3-mile radius

- The seasonal population reaches its peak through the Rose Bowl with sports events, concerts and New Years Eve/Day

- Ranked as one of the top walking and retail locations in the United States with a walk score of 98 and a bike score of 73

- National icons such as Art Center College of Design, JPL and Cal Tech

- Deeply rooted with history, architecture and art with notable neighbors such as the Norton Simon Museum, City Hall and hundreds of historically significant buildings

- Multiple Metro Gold Line stops are located throughout the city - Bringing in people from Azusa to Downtown Santa Monica

- You'll find a combination of mom-and-pop shops and major tenants keeping the history of the city alive while bringing a modern day flare





Hoss MacVaugh
626.583.8400 | Hoss@MacVaugh.com
#00971669

MACVAUGH & CO
Commercial Real Estate Services

The information contained herein has been obtained by sources deemed to be reliable. While we have no reason to doubt its accuracy, we do not guarantee to and assume any liability for any inaccuracies and/or omissions. Terms and conditions are subject to change. BRE License #02138664